

IB MIDDLE YEARS PROGRAMME (Grade 6 -10)

Introduction

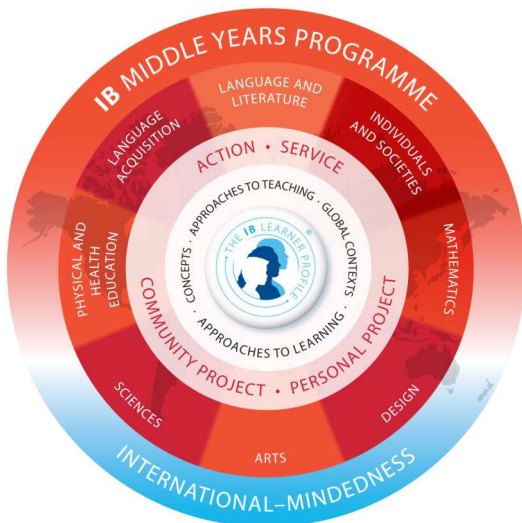
The IB's Middle Years Programme (MYP), for students from Grade 6 to 10, builds on the structured, student-centred and inquiry-based foundation laid in the Primary Years Programme in Primary School and prepares the students for Diploma Programme in Senior School. It is a framework that encourages students to make practical connections between their studies and the real world.

All the subjects are criterion-related and have strong inter-disciplinary elements. This curriculum is approached through inquiry, developing what the students know into an exciting journey of knowing more—stimulating the student's latent curiosity and honing the skills of research, expression, presentation and application. Students learn to share experiences and work in teams.

Curriculum

The IBMYP comprises of 8 subject groups:

1. Language and Literature
2. Mathematics
3. Sciences
4. Individuals and Societies
5. Language Acquisition
6. Arts
7. Design
8. Physical and Health Education



Inter-disciplinary learning

Each year, students indulge in making connections between subjects and transferring knowledge gained in one subject to another, through cross-curricular and Interdisciplinary Projects.

Personal Project

A Personal Project is an individual long-term project completed in Grade 10. It is the consolidation of learning in middle years of schooling. Students choose the topic of their interest and wish to learn more about. They achieve it through systematic research and are assessed through set criteria. Eventually, their work is celebrated in an exhibition. It is a mandatory component of the MYP.

Service as action, through community service

Students take action when they apply what they are learning in the classroom and beyond. Also, practical

Grades 6 to 8 in Pathways World School, Aravali

Subjects studied by students of Grades 6-8:

In Grades 6 to 8, apart from the assessed subjects, Middle School students also undertake some unassessed curricula which enrich their learning in various ways. This includes Dance, Music, Drama and Yoga.

All students take all the courses in all groups except in Language Acquisition where students choose any one language from French, Spanish or Hindi. Students who have difficulty in meeting the demands of Language and Literature – English will do English as Language Acquisition. Students joining in the middle of MYP journey will be considered for Language Acquisition individually and may require a separate placement, if deemed essential. The school's Additional/Academic Learning support also offers to students who have learning difficulties.

Subject Groups	Subject Disciplines
Language & Literature	<ul style="list-style-type: none">English
Mathematics	<ul style="list-style-type: none">Mathematics
Sciences	<ul style="list-style-type: none">Physical ScienceLife Science
Individuals & Societies	<ul style="list-style-type: none">GeographyHistory
Language Acquisition	<ul style="list-style-type: none">EnglishSpanishFrenchHindi
Arts	<ul style="list-style-type: none">Visual ArtsDanceMusicDrama
Design	<ul style="list-style-type: none">Product DesignDigital Design
PHE	<ul style="list-style-type: none">Physical & Health Education

Grades 9 and 10 in Pathways World School, Aravali

For Grade 9 and 10, students are able to make subject-choices keeping in view their interests for Grade 11 and 12 and further studies. Students prepare themselves for an e-assessment which will take place at the end of Grade 10. E-assessment consists of on-screen assessments and e-portfolios. In Grades 9 and 10, students will continue to participate in Community Service and additionally do a Personal Project. They will also take an Inter-disciplinary assessment.

Pathways World School, Aravali offers a wide range of subject disciplines under each of the 8 subject groups. Please look at the table on the next page. Subject disciplines marked * do not count towards MYP certification. However, the school will run an in-school curriculum and students will get the internal school-based course results and certificate. Students who wish to continue the study of these courses in Diploma Programme will benefit from these subjects. Subject disciplines under subject groups marked ** are skill-based subjects.

Subject Groups	Subject Disciplines	Assessment
Language & Literature	<ul style="list-style-type: none"> English 	On-screen assessment
Mathematics	<ul style="list-style-type: none"> Mathematics Extended Mathematics Standard 	On-screen assessment
Sciences	<ul style="list-style-type: none"> Physics Chemistry Biology Integrated Science Environmental Science* 	On-screen assessment
Individuals & Societies	<ul style="list-style-type: none"> Geography History Integrated Humanities Economics* OR Business and Management* 	On-screen assessment
Language Acquisition	<ul style="list-style-type: none"> English Spanish French Hindi 	E-portfolio
Arts**	<ul style="list-style-type: none"> Visual Arts Dance Music Drama 	E-portfolio
Design**	<ul style="list-style-type: none"> Product Design Digital Design 	E-portfolio
PHE**	<ul style="list-style-type: none"> Physical and Health Education 	E-portfolio

Eligibility for MYP Certificate:

- a. Complete the *on-screen* examinations for a minimum of four subjects, one from each of the following subject groups:
 - Language and Literature
 - Individuals and Societies
 - Sciences
 - Mathematics
- b. Take the Inter-disciplinary examination
- c. Submit an *e-portfolio* for Language Acquisition
- d. Submit at least one *e-portfolio* from any of the following skill-based subject groups:
 - Arts
 - Physical and Health Education
 - Design
- e. Submit the Personal Project
- f. Complete the school's requirement for Community Service

(Source: General Regulations: Middle Years Programme, April 2014)

At Pathways World School, Aravali, each student must do 8 subject disciplines in total while abiding by the aforesaid eligibility criteria for MYP Certificate.

Pathways World School, Aravali Retreat, Off Gurugram-Sohna Road, Gurugram-122 102, Haryana (NCR Delhi), India

T: +91 124 4513000 | 9818666677 /88 /44 /22 | **F:** +91 124 4513002 | **E:** admissions.aravali@pathways.in

Mailing Address: Corporate Office, Baliawas, Off Gurugram – Faridabad Road, Near TERI Gram, Gurugram – 122003

T: +91 124 4871000 | **F:** +91 124 4871002 | www.pathways.in